

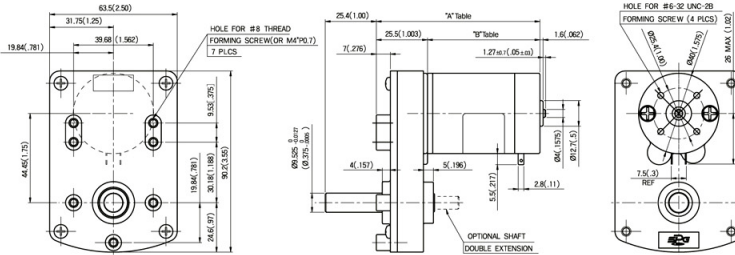
STANDARD TYPE PERMANENT MAGNET DC MOTOR



SR SERIES COMPACT DC GEARED MOTOR

MOTOR DIMENSION

unit: mm(inch)



GEARED MOTOR DIMENSION (Table)

unit: mm(inch)

TYPE	"A" DIMENSION	"B" DIMENSION
RM42□□□	72.0 mm (2.835)	46.5 mm (1.831)
RM43□□□	81.5 mm (3.209)	56.0 mm (2.205)

TYPE	"A" DIMENSION	"B" DIMENSION
RM44□□□	86.5 mm (3.406)	61.0 mm (2.402)
RM45□□□	92.2 mm (3.630)	66.7 mm (2.626)
RM46□□□	103.1 mm (4.059)	77.6 mm (3.055)

GEAR HEAD RATED LOAD

(at DC 24V)

TYPE	GEAR RATIO	PERMISSIBLE TORQUE					
		62.5	68	125	144	169	192
RM42□□□	rpm	112	103	56	49	42	37
	kg-cm	9	9	16	19	22	25
	N.m (lb-in)	0.9(8)	0.9(8)	1.6(14)	1.9(16)	2.2(19)	2.5(22)
RM43□□□	rpm	96	88	48	42	35	31
	kg-cm	15	14	26	30	36	41
	N.m (lb-in)	1.4(13)	1.4(12)	2.6(23)	3.0(26)	3.5(31)	4.0(35)
RM44□□□	rpm	98	90	49	43	36	32
	kg-cm	15	15	27	31	37	42
	N.m (lb-in)	1.5(13)	1.5(13)	2.7(24)	3.1(27)	3.6(32)	4.1(36)
RM45□□□	rpm	102	93	51	44	38	33
	kg-cm	19	18	34	39	45	52
	N.m (lb-in)	1.8(16)	1.8(16)	3.3(29)	3.8(34)	4.5(39)	5.1(45)
RM46□□□	rpm	79	72	39	34	29	26
	kg-cm	25	25	46	52	62	70
	N.m (lb-in)	2.5(22)	2.4(22)	4.5(40)	5.1(46)	6.0(53)	6.9(61)

- It is the permissible torque of the assembled motor and gearhead
The permissible torque of the assembled with motor and inter-decimal gearhead is 70kg·cm(60lb·in).
- □ indicates that the output shaft of the geared motor rotates in the same direction as the output shaft of the motor.
Others indicate rotation in the opposite direction.
- Rotational speed based on no-load speed divided by gear ratio.
The actual rotation speed is less 2-20% than the displayed value according to the load